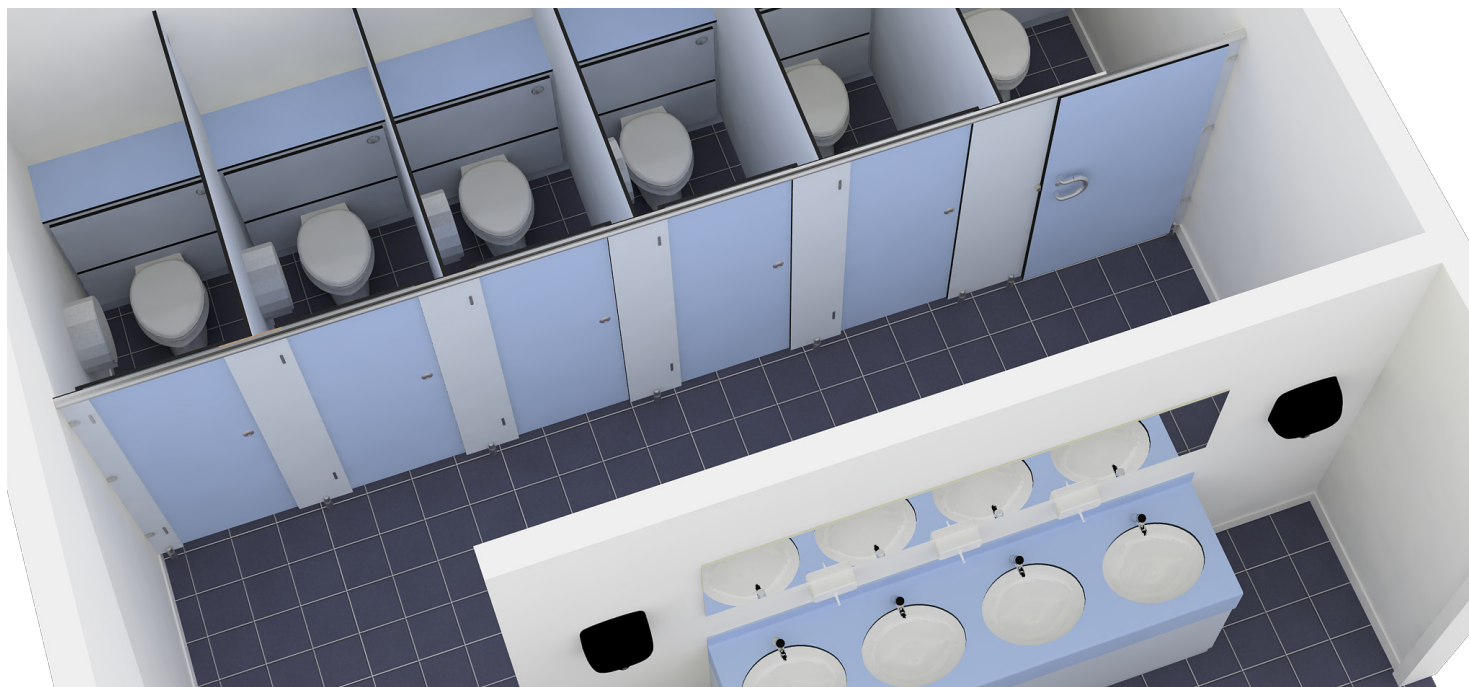


# Active (Compact)



## Features

With a choice of board colours to choose from and with solid aluminium hardware, Active (Compact) is a cubicle for all wet areas or those susceptible to rough usage.

A wide selection of colours can be chosen for the doors, partitions and pilasters with machined and profiled edges.

## Materials

- 13mm Compact grade laminate
- Satin anodised aluminium hardware

## Safety

- Emergency release locks
- High strength boards and fittings
- Doors lift off in case of severe emergency



## Service



Free site survey, design and quotation service

nbs

Specification service



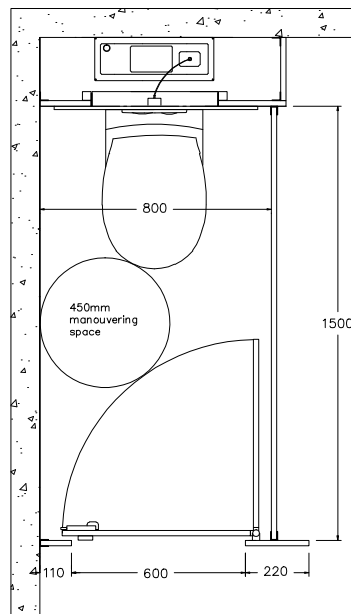
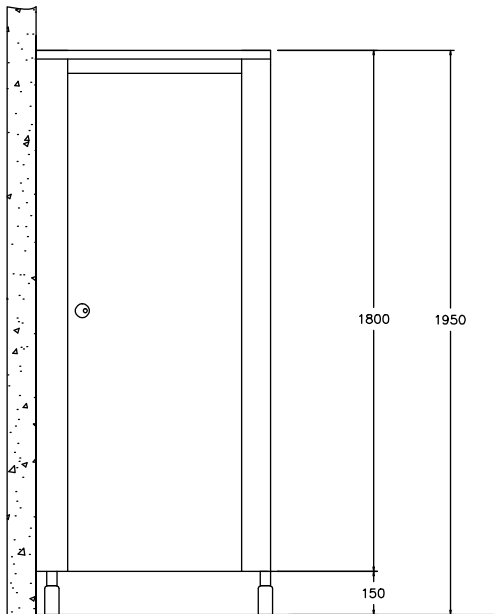
Full installation service

**3yr**

Warranty

Designed, supplied and/or installed  
**...beautiful cubicles ...beautiful washrooms**

# Technical Specification



## Cubicle Sizes

Ideal sizes, making best use of materials and to provide sufficient space, are 1500mm deep x 800mm wide. However, all necessary sizes can be accommodated.

1950mm overall height including 150mm floor clearance

450mm diameter manoeuvring space essential within Building regulations

For guidance on Building regulations, DDA requirements, and the provision of ambulant and enlarged cubicles, please refer to our website - [www.iglooswashrooms.com](http://www.iglooswashrooms.com)

**NBS** for NBS specifications please refer to our sales team.

## Fittings

- Satin anodised aluminium



### Indicator Bolt

- Building Regulations / DDA compliant
- Strong aluminium construction
- External emergency release
- Red / white indicators



### Pedestal

- Strong aluminium construction
- Anti tamper through fixings
- 150mm clearance +/- 15mm



### Cleat

- Pressed aluminium construction
- Anti tamper through fixings
- Caters for out of line walls



### Hinges

- Strong aluminium construction
- Anti tamper through fixings
- Adjustable for door to fall close / open



### Coat Hook

- 35mm projection
- With integral buffer
- Supplied with anti tamper fixings



### Headrail

- 38 x 22 x 3mm L section aluminium extrusion or
- 47 x 19 x 3mm U section for 12mm Compact

**IGLOOS Ltd, Cherry Park, Ardeley, Stevenage, Hertfordshire, SG2 7AH**

**+44 (0) 1438 861418** ✉ [design@iglooswashrooms.com](mailto:design@iglooswashrooms.com) 🌐 [www.iglooswashrooms.com](http://www.iglooswashrooms.com)

All details are correct at time of print. IGLOOS Washrooms reserve the right to change or alter specifications without notice.